

**A LEADING MANUFACTURERS & EXPORTERS OF  
MEDICAL GAS PIPELINE EQUIPMENTS  
AND ACCESSORIES**

**RANDALL MEDICAL TECHNOLOGIES PRIVATE LIMITED**

# About us

**RANDALL MEDICAL TECHNOLOGIES PRIVATE LIMITED (MEDFLOA)** are leading manufacturers, suppliers and exporters of supreme quality Medical Equipments and Spare Parts for past two decades. We are Prestigiously Known for Medical Gas Pipeline Systems, Medical Gas Terminals, Medical Single & Double Arm Pendants and ICU Bed head Panels Manufacturers for its outlined Perfection, Performance and Quality. These products are made from the highest quality metals and alloys from reliable industry suppliers. Manufactured in accordance with industry standards and regulations, these products are widely used in various hospitals, health centers, medical clinics and research laboratories. Due to their high performance, durability, robust construction and optimal performance, these products are in great demand in the market and we have offered them at best prices.

Since the creation of our company, we have been supported and well supported by a team of Intelligent and hard working professionals. With the help of our experienced and qualified professionals, we are able to meet the needs of our valued customers effectively. Selected by rigorous procedures, they are trained regularly through seminars and factory. These training help them to improve and make perfect their technical and professional skills in the most effective way. Due to our large production capacity, our rich warehousing unit, our extensive distribution network and our customer-centric approach, we have the capacity to send our product worldwide.



“Enhance the lives of people through significant innovation”



“ We will provide high-quality, premium branded products and services that will improve the lives of individual around the world”

## ISO 9001 : 2008 Certified Company



# PENDANTS



**EMPORIUM-VIXEN**



**EMPORIUM-LINEN**



**EMPORIUM-VIGGO**



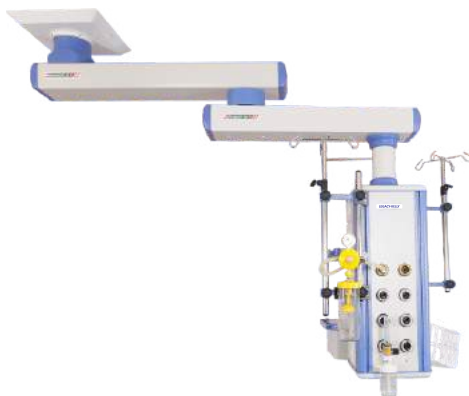
**KRIYA-GLIMMER**



**KRIYA-WEVS**



**KRIYA- WINSTON**



**LEGACY-KELLY**



**LEGACY-KEROS**



**LEGACY-KRISTINA**

## SPECIFICATION ( Our Range of Pendants Anesthesia, Surgeon, Single Arm, Double Arm, Rigid, ICU, & Laparoscopy )

- Double arm medical pendants is mainly used in large operation theaters • Medical gas, electrical power & loading medical Equipments
- 2 Arm system for OT, Extension arm 1 move by (radius) 900mm+650m • Bearing Locks used in pendant are 6 nos Tapper roller (Imported)
  - Vertical Piping Material used are seamless steel • Level degree rotation 0 - 330 extension arm and terminal • Pendant Consol can rotate together and separately • Net loading capacity 100 to 150kg • Medical gas outlets configuration Oxygen : 2 nos, Vacuum: 2 nos, Medical air:1no, Medical Air7 bar:1 no, Nitrous oxide : 1 no. (Quantity Optional) • Electrical 5-15 amps switch and socket: 10nos (Universal standard) • Main material used in pendant are high density aluminum alloy extrusion with whole sealed design • Arm high density aluminum alloy extrusion, ceiling mounted installation the reliable and firm. • Pendant net weight 150kgs access by equipment carrier and 1 drawer • Stainless steel IV pole and ward vacuum unit clamp • System consol height 500mm

# PENDANTS



**KRIYA-WESCOT**



**KRIYA-WILMER**



**KRIYA-WESLEE**



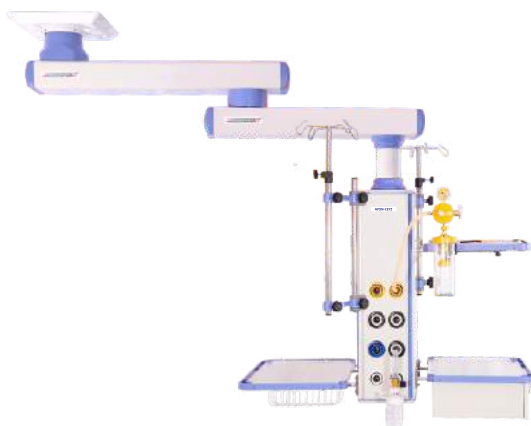
**LEGACY-WAGGLE**



**LEGACY-BRISK**



**LEGACY-SAGA**



**AYON-CEYZ**



**AYON-CHIRON**



**AYON-CHISEL**

# PENDANTS



**ORYGEN-LUXOR**



**ORYGEN-LORENTZ**

# BED HEAD PANELS

## General Specification

- Attractive appearance: Aesthetic and intelligent design compact, sleek and good finish.
- Strong Aluminum extrusion Alloy
- Anodized extrusion
- Monitor mounted system available
- Profile accommodate all commonly used rail clamp system
- Available in standard one, two or three meter length is customer specified (up to three meters)
- Outlet Up to 5 gas service
- 5-15 Amps socket as per customer choice
- Nurse call system
- IV Stand
- Monitor tray
- Syringe pole
- Ward vac unit Clamp
- Length as per customer requirement



**VERSATILE - MERCURY**



**VERSATILE - VENUS**



**VERSATILE - JUPITER**

## Colours Available



# BED HEAD PANELS



**VERSATILE - TURBO**



**CARPUS**



**LENNUS**



**MAYA - WAGGLE**



**REGAL**



**ESANA - DAZE**



**ESANA - CRUX**



**LEGACY - VISTA**



Side Angle



**HARMONEY - SUPERIOR**



**BED HEAD PANEL MONITOR TRAY**



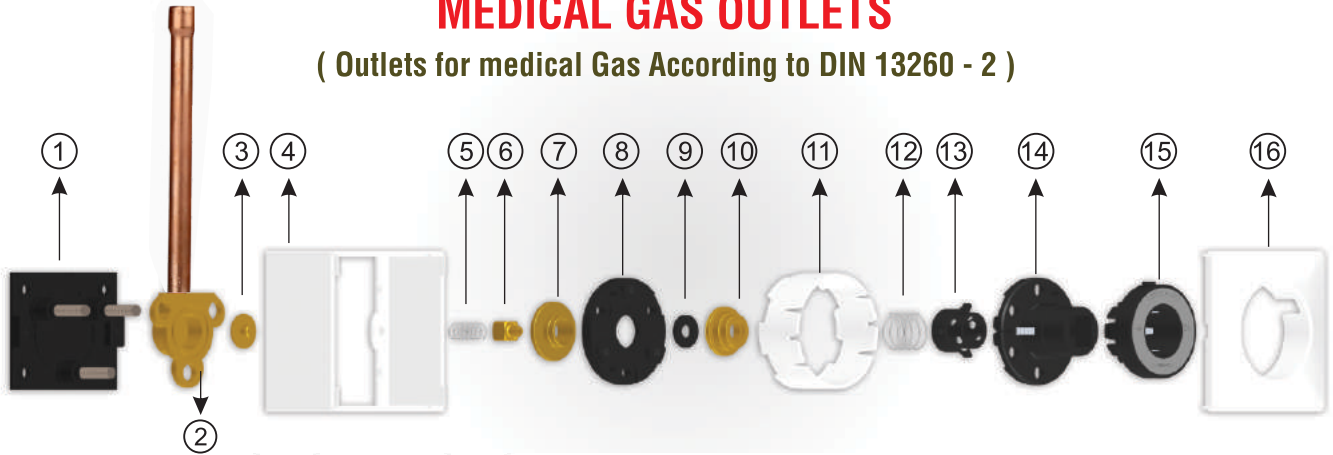
**WALL MOUNTED MONITOR TRAY**



**MAYA - FLOR**

# MEDICAL GAS OUTLETS

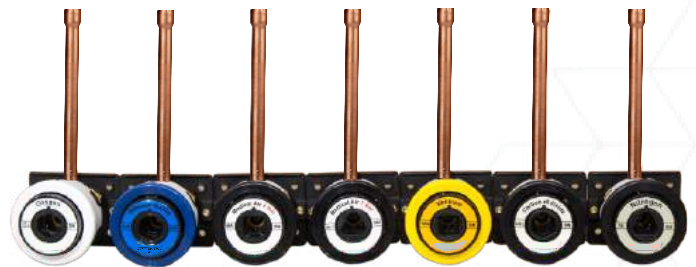
( Outlets for medical Gas According to DIN 13260 - 2 )



- 1. Base Plate 2. Brass Fixture 3. Maintenance Valve 4. Outer Cover
- 5. Spring 6. Check Valve 7. Check Valve Disk
- 8. Gas Specific Plate 9. Rubber Disk 10. Housing 11. Body Housing
- 12. Balls Guide Spring 13. Balls Housing
- 14. Internal Gas Coding Body 15. Release Cup 16. Outer Cover Plate



**DIN WALL MOUNTED**



**DIN PIPE ENTRY OUTLETS**



**DIN TOP ENTRY**



**DIN BOX TOP ENTRY**



**DIN BACK ENTRY OUTLETS**



### Din Standard outlets

Our clients can avail from us a supreme quality Din standard outlets. This products is designed in compliance with prevailing quality norms. We manufacture with world class components and cutting-edge technology which ensure the long and smooth working of the product. More over the product is tested on various parameters by our quality controllers. Our product is available in different specifications at very nominal Price.

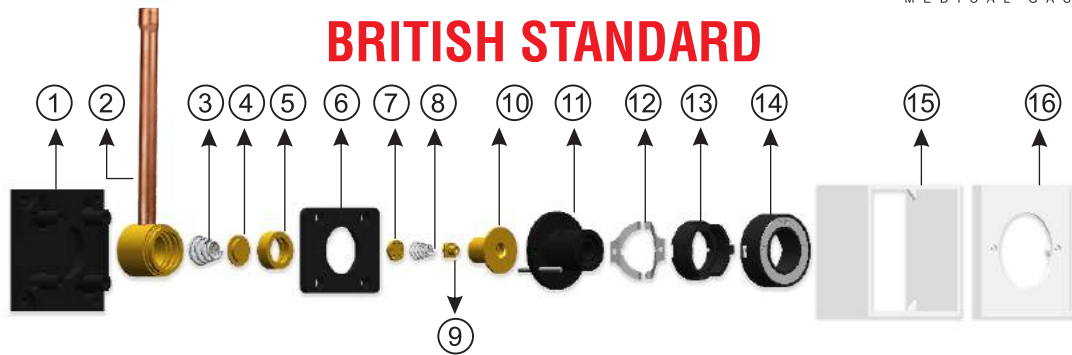


**DIN PROBES**



**DIN CONCEALED**

# BRITISH STANDARD



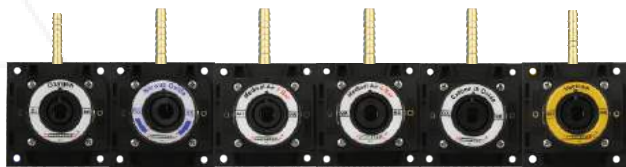
- 1. Base Plate 2. Brass Fixture 3. Spring 4. Maintenance Valve 5. Maintenance Valve Housing 6. Gas Specific Plate
- 7. Check Valve Plate 8. Spring 9. Check Valve 10. Check Valve Housing 11. Internal Gas Coding Body 12. Tension Spring Plate
- 13. Release Plate 14. Release Cup 15. Outer Cover 16. Outer Cover Plate



**BS BACK PIPE ENTRY OUTLETS**



**BS BOX TOP ENTRY OUTLETS**



**BS NIPPLE TYPE OUTLETS**



**BS WALL MOUNTED OUTLETS**

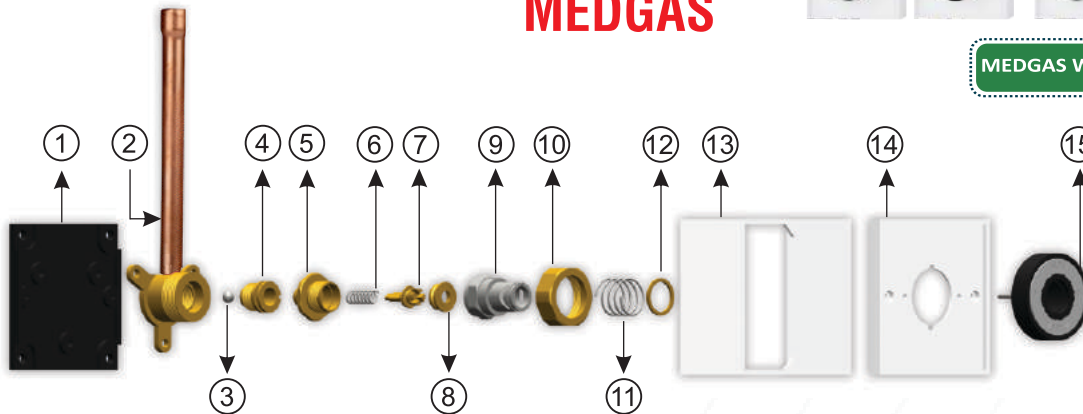


**BS PROBES**



**MEDGAS WALL MOUNTED OUTLETS**

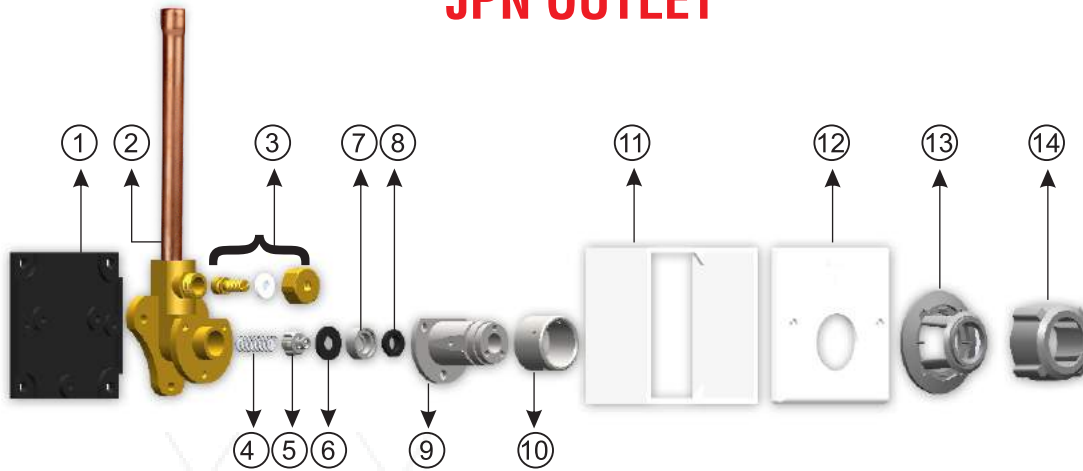
# MEDGAS



- 1. Base Plate 2. Brass Fixture 3. Ball 4. Maintenance Valve 5. Check Valve Housing 6. Spring 7. Check Valve
- 8. Check Valve Cup 9. Internal Gas Coding Body 10. Lock Nut 11. Spring 12. Spring Plate 13. Outer Cover
- 14. Outer Cover Plate 15. Release Cup



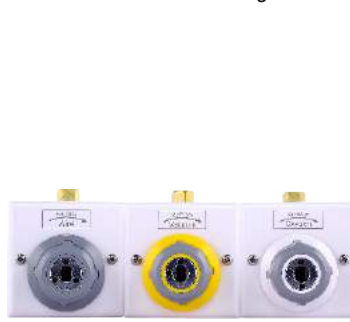
# JPN OUTLET



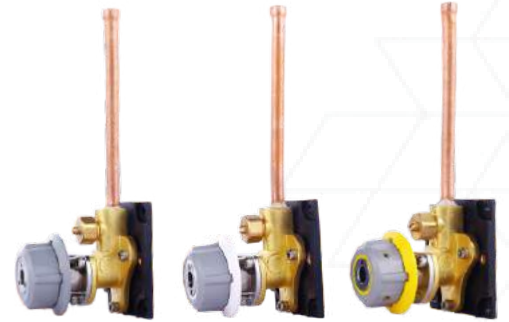
1. Base Plate
2. Brass Fixture
3. Maintenance Valve
4. Spring
5. Check Valve
6. Rubber Washer
7. Cup
8. Rubber Washer
9. Internal Gas Coding Body
10. Release Brass Cup
11. Outer Cover
12. Outer Cover Plate
13. Gas Colour Coding Cup
14. Gas Colour Coding Release Cup



**JPN WALL MOUNTED**



**JPN TOP ENTRY BOX**



**JPN PIPE ENTRY**

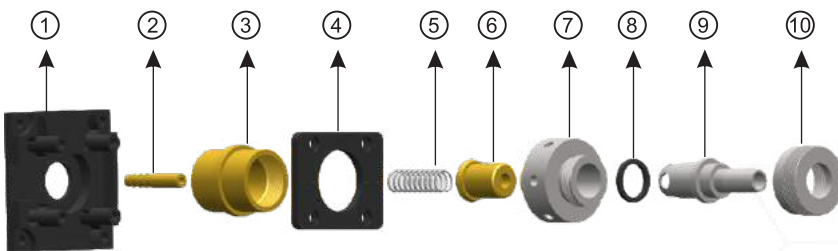


**JPN PROBES**

# AGSS GAS OUTLETS



**AGSS BACK ENTRY**



1. Base Plate
2. Hose Nipple
3. Brass Fixture
4. Brass Fixture Lock Plate
5. Spring
6. Check Valve
7. Check Valve Housing
8. Rubber Washer
9. AGSS Probe
10. AGSS Probe lock Nut



**AGSS PROBES**



**BPC FLOWMETER WITH HUMIDIFIER**



**HUMIDIFIER**



**WARD VACUUM UNIT 600 ML**



**600 ML VACUUM JAR WITH LID**



**WARD VACUUM UNIT 2000 ML**



**2000 ML JAR WITH LID**



**VACUUM REGULATOR**



**THEATER SUCTION TROLLEY**



**SS THEATER SUCTION TROLLEY**



**NYLON HOSE**



**MEDICAL GAS ALARM SYSTEM**



**AREA VALVE BOX**



**SEMI AUTOMATIC CONTROL PANELS**



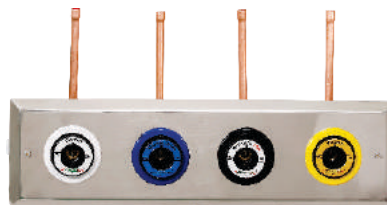
**MANIFOLD THREADED NRV**



**LOW PRESSURE ALARM ANALOGY**



**NIST CONNECTORS**



**SS CONCEALED BOX**



**MS CONCEALED BOX**



**HIGH PRESSURE TUBE**



**COPPER PIPES AND FITTINGS**

# ACCESSORIES



**Randall**<sup>®</sup>

**RANDALL MEDICAL TECHNOLOGIES PRIVATE LIMITED**

**( MANUFACTURERS AND EXPORTERS )**

NO. 50A, 50A-1, Elango Nagar, Avarampalayam, Ganapathy (PO), Coimbatore - 641 006. Tamilnadu, India.

☎ : 0422 2566666 📞 : +91 99445 33888, +91 95008 33888



✉ info@randallgroups.com, info@medfloa.com , info@medflo.in

🌐 www.randallgroups.com, www.medfloa.com, www.medflo.in

Follow Us  
medfloa

